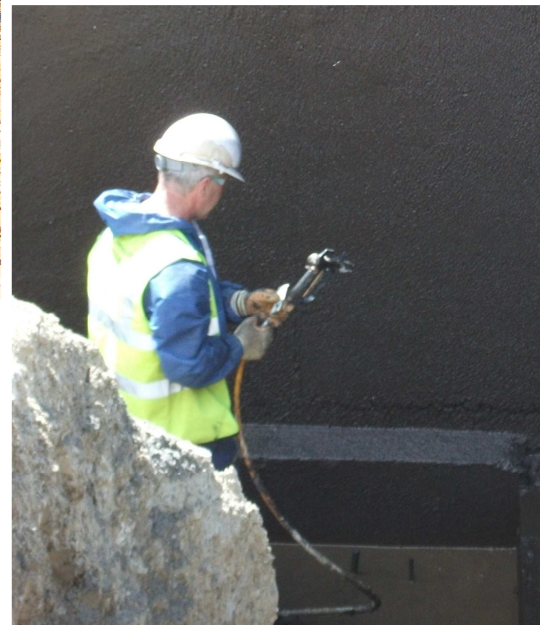


Case Study

External Basement Waterproofing - Glendale at Warwick

Client: Carbon Logix



Background:

Leading fast-track ICF construction company, Carbon Logix of Durham commissioned Beautiful Basements to externally tank a new build 166m² basement in Warwickshire.

The contract was carried out by the company's specialist spray division, National Tanking. Using Deuxan, a solvent free, thick bitumen sealant by leading waterproofing systems manufacturer Köster, the bitumen was sprayed at very high pressure onto the ICF substructure to a thickness of 4mm. The accuracy of the high pressure spray ensures a continuous thickness and excellent adhesion across the surface reducing the potential for air bubbles and other defects associated with some waterproofing methods. Once cured, the resulting surface provides a continuous, flexible, protective membrane which solves bridging cracks upto 2mm and tolerates natural ground movement over time.

Further resilience was provided by embedding mesh within the Deuxan coating together with protection boards before backfilling just 24 hours later. The entire waterproofing was completed in one day.

National Tanking is a dedicated 'Contract Only' division of award winning basement specialists Beautiful Basements. All projects carried out by National Tanking using sprayed Deuxan are fully insurance backed.

See our time lapse video of external spraying at [www.youtube.com](http://www.youtube.com/watch?v=gVDS-hGRLik) follow the link to <http://www.youtube.com/watch?v=gVDS-hGRLik>

Beautiful Basements 3D Westbridge Industrial Park, Leicester LE3 5LX T: 0116 233 8180 F: 0871 433 5174
E: info@beautiful-basements.co.uk W: www.beautiful-basements.co.uk